

**ACTIVE
TRAVEL** 
for **CULTURAL
EXPLORERS**

Barcelona

immersion

SPONSORED BY



THE UNIVERSITY OF
ALABAMA
A L U M N I

MARCH 4-12, 2017

Other dates available upon request



Inspiring Moments

A World Apart

The story of travel involves more than a ticket and a passport. It should weave together discovery, education and humanity, the best elements of any compelling tale. Your personal travel story begins with our commitment to delivering authentic experiences with local people.

The incomparable value of your journey lies in the personalized care you receive from your Travel Director and the knowledge you gain from expert guides and lecturers, who call this area home.

By eliminating logistical worries, your multilingual Travel Director allows you to immerse yourself comfortably in your surroundings. This high-caliber professional makes you feel safe and important by creating a convivial, welcoming atmosphere.

The other important characters in this story are the guides and lecturers, whose regional expertise shines in their insider perspective and commentary.

With these specialists at your side, become intimately engaged in the rhythm of Barcelona, adding another memorable chapter to the rich story of your life.

Above: La Sagrada Família

- Be charmed by Barcelona's incredibly **imaginative and beautiful buildings** around every turn.
- Learn how to **prepare traditional Catalán dishes** during a special cooking session.
- Marvel at the eye-popping color and extraordinary details of **Gaudí's masterpieces**.
- Sample cava, a sparkling wine, at a winery in the **scenic Penedès region**.
- Explore **Montserrat**, a lovely monastery tucked into a mountainside.
- Admire an incredible collection of **Picasso's artwork**, including many of his earliest works.



Dear Alabama Travelers,

Please join us on an exciting exploration of Barcelona, featuring the best of Barcelona and Catalonia. Over seven nights, enjoy an in-depth look at this incredibly vibrant city and the extraordinary Catalan culture. Immerse yourself in Barcelona's history, art, architecture and cuisine and experience its highly original flair. See Barcelona's most iconic landmarks and venture outside the city to nearby fascinating destinations for a greater understanding of Catalonia's heritage.

Discover this world-class city while taking advantage of the ease, value and fun of group travel. Our itinerary has been expertly planned so that you still have plenty of time to explore independently, allowing you to pursue your individual interests and create adventures of your own. This incredible journey is limited to 28 travelers, so be sure to make your reservations today!

Sincerely,

Ashley Clayton Olive
Alumni Tour Coordinator
University of Alabama National Alumni Association

800-323-7373

al.ahitravel.com

| UNESCO |

The Works of Antoni Gaudí are UNESCO World Heritage sites featured in this program.



Parc Güell



Plaça d'Espanya



Tango dancers



Plaça Reial, Barri Gòtic

Cosmopolitan, vibrant and enchanting, Barcelona is the jewel of Spain's Mediterranean coast. Through the years, Barcelona's creative citizens have pushed innovations in architecture, art, cuisine and more. Delve into many facets of Barcelona's history within its neighborhoods. Walk through the Barri Gòtic, where the narrow warren of streets will transport you to medieval Barcelona, and marvel at the whimsical genius of Gaudí in the Eixample district. Stroll through the streets of El Born, where medieval knights once jousted. Immerse yourself in Barcelona, and discover the allure of this unique and wonderful city.

DAY ONE

IN TRANSIT

Depart for Barcelona, Spain. ✈

DAY TWO

BARCELONA, SPAIN

Arrive in Barcelona and transfer ✈ to the Renaissance Barcelona Hotel.

Educational Focus: *The History of Catalonia and Barcelona.* Discover the fascinating history of this unique corner of Spain. This evening, meet your fellow travelers at a Welcome Reception and Dinner.



ACTIVE TRAVEL for CULTURAL EXPLORERS

Immersion Programs are moderately paced with a good balance of included activities and excursions and time to explore on your own. Travelers should be physically fit, able to walk distances of up to three miles, exit and enter trains quickly and navigate stairs, hills and uneven terrain.

DAY THREE

B I L

BARCELONA

Excursion: *The Barri Gòtic.* Set out on a walking tour of the Gothic Quarter, where medieval Barcelona flourished. Visit Plaça St. Jaume, where civic leaders have run the city since Roman times; the Plaça del Rei, the historic powerhouse of medieval Catalonia; the Cathedral of Barcelona; and the Roman walls.

Local Flavor: Learn how to make delicious Catalán cuisine during a hands-on cooking class.

Independent Exploration: The afternoon is at leisure.

DAY FOUR

B I D

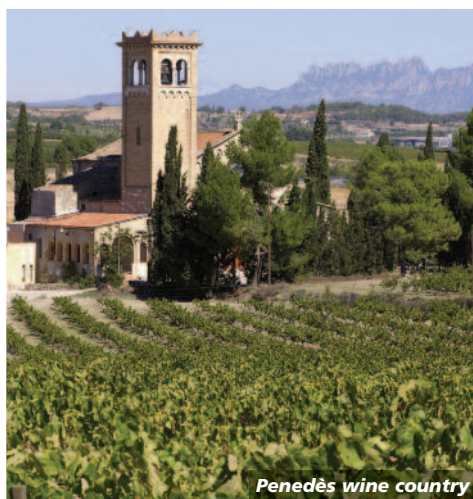
BARCELONA

Educational Focus: *Modernism and Antoni Gaudí.* Discuss how the eccentric Catalán architect, Antoni Gaudí (1852-1926), shaped the city of Barcelona with his abstract structures and vibrantly colored tiles.

Excursion: *Gaudí's Barcelona.* Seven UNESCO World Heritage sites in and around Barcelona testify to Antoni Gaudí's modernist architectural contributions. Visit his unfinished masterpiece, the basilica La Sagrada Família, which will be completed in 2026, 100 years after his passing. After assuming the project in 1883, he labored for 43 years on its creation until his death in 1926. At every turn, admire the remarkable architectural elements inspired by



Cathedral of Barcelona



Penedès wine country



Dalí Theater-Museum, Figueres



Christian symbolism and nature's geometry. Then visit the modernist, surreal Casa Batlló, a fascinating example of Gaudí's art nouveau style, along Barcelona's most stylish boulevard, Passeig de Gràcia.

Independent Exploration: The afternoon is at leisure.

Local Flavor: Enjoy delicious regional cuisine at dinner.

DAY FIVE

B

BARCELONA

Independent Exploration: Perhaps spend time exploring the Quadrat d'Or, or "Golden Square," the neighborhood that surrounds the Passeig de Gràcia, or head to the Montjuïc area with its outstanding museums.

ELECTIVE | Girona and Dalí's Figueres. Visit the town of Girona, built by the Romans 2,000 years ago. Girona later became an important Catalan town during the Middle Ages. Within the historic town center is the Call, the medieval maze of narrow streets that was home to the town's Jewish community. Enjoy an engaging walking tour of the old city. Continue to Figueres, the hometown of surrealist artist Salvador Dalí. Visit the Dalí Theater-Museum, which is said to be the world's largest surrealist object. The colorful building adorned with eggs on the top is as whimsical as the artwork displayed inside.

DAY SIX

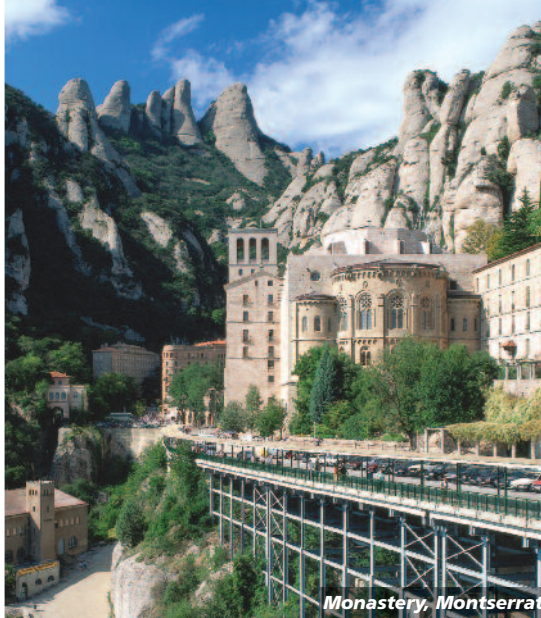
B

BARCELONA

Excursion: Barcelona — Through the Eyes of Picasso. Visit the Picasso Museum

to see one of the largest collections of works by the influential painter, housed in five medieval townhouses. Then follow in Pablo Picasso's footsteps as you explore some of his favorite haunts in the city. Arriving at 14 to attend art school, Picasso drew creative inspiration from the city for his artwork and embraced its progressive attitudes about art. Continue with a tour of El Born, site of medieval jousting tournaments and trade guilds. See the Santa Maria del Mar, a 14th-century church built in the Gothic style of Catalonia.

Independent Exploration: The remainder of the day is at leisure.



Monastery, Montserrat

DAY SEVEN

B I L

MONTSERRAT | PENEDE'S WINE COUNTRY

Excursion: *The Monastery of Montserrat and Penedès Wine Country.* Visit this ninth-century Benedictine monastery built along a sandstone mountainside, surrounded by towering pillar formations. Step inside the Basilica and contemplate the serene statue of the Virgin of Montserrat, the patroness of Catalonia. Continue to the Penedès wine region, which is best known for producing cava, a sparkling wine.

Local Flavor: Enjoy a country-style lunch featuring cava made at a family-owned winery.

DAY EIGHT

B I D

BARCELONA

Educational Focus: *Contemporary Catalonia.* Learn about life in Catalonia today.

Independent Exploration: Enjoy your final day at leisure in Barcelona. Explore on your own, shop for souvenirs or spend the day in museums and galleries.

Gather with your fellow travelers for a Farewell Reception and Dinner.

DAY NINE

B

IN TRANSIT

Transfer✈ to the airport for the return flight to your gateway city.

Note: *Itinerary may change due to local conditions. Walking is required on many excursions, and surfaces may be uneven or unpaved.*

✈ *Provided for AHI FlexAir participants*

B I L D denotes included breakfasts, lunches and dinners.

🍷 *Elective experiences available at an additional cost*

| INCLUDED FEATURES |

ACCOMMODATIONS

(With baggage handling.)

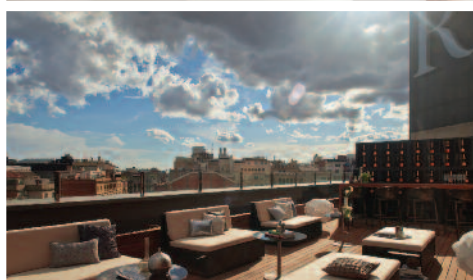
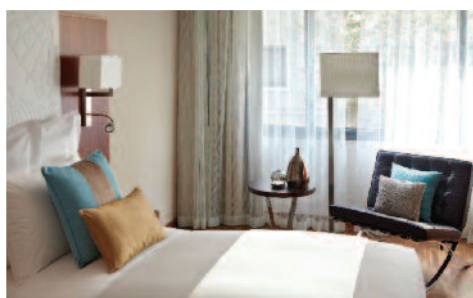
- 7 nights in Barcelona, Spain, at the first-class Renaissance Barcelona Hotel.

MEALS

- Enjoy seven breakfasts, two lunches and three dinners; tea or coffee with all meals, plus wine with dinner.
- Sample authentic regional specialties during select meals at featured local restaurants.
- Take advantage of leisure time to try the local cuisine independently.
- Attend a Welcome Reception and Dinner.
- Gather for a Farewell Reception and Dinner.

YOUR EXCITING TRAVEL PROGRAM

- **Informative educational programs,** presented by local experts, will enhance your insight into the region.
- **Personal VOX listening devices** allow you to hear every word from your expert, English-speaking guides.
- Tipping of excursion guides and drivers.
- **The following excursions:**
 - Explore the historic Barri Gòtic.
 - Admire the modernist architecture of Antoni Gaudí.
 - Stroll through El Born, one of Barcelona's most fascinating neighborhoods.
 - Explore the Benedictine monastery in Montserrat.
 - Visit the Penedès wine country.
 - Visit the Picasso Museum.



AHI TRAVEL EXPERTISE

From your reservation to your return home, we are here to ensure you have the adventure of a lifetime.

Before you go:

► **TRAVEL CONSULTANTS** |

These experts stand ready to answer your questions about activities, meals, accommodations and more as they guide you through the reservation process.

► **PASSENGER SERVICE**

REPRESENTATIVE | Once you have reserved your spot, enjoy personalized assistance from this specialist, your one point of contact who will help you with everything from arranging flights to booking elective activities to fulfilling special requests.

► **TRAVEL INFORMATION** | Receive extensive destination information and travel tips compiled by our travel-savvy team to fully prepare you for your journey.

Once you arrive:

On the ground, three layers of top-quality professionals offer their insiders' perspective. From suggesting the best café or pub to sharing a laugh over the stories of the day, our dedicated team takes your adventure to the next level.

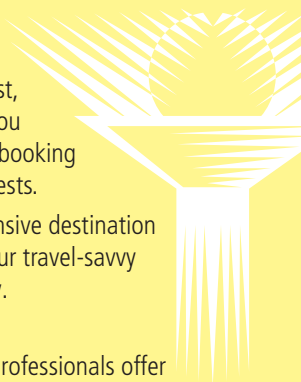
► **TRAVEL DIRECTOR** | Throughout your journey, you will be in the care of a seasoned AHI travel professional who will manage all the logistics, allowing you to relax and simply soak up the ambience. Resourceful, knowledgeable and attentive, your Travel Director helps to ensure you enjoy an unforgettable travel experience.

► **EXPERT GUIDES** | Who better to show you around than the people who live there? We've specially selected informed and enthusiastic local professional guides who understand the needs of our educated and curious travelers. Warm and genuine, they're ready to share their passion for their country with you.

► **LECTURERS** | Coming from all walks of life, our entertaining local lecturers open your eyes to history and current events. The breadth of their knowledge deepens your appreciation for the region and its heritage.



Façade, La Sagrada Família



RENAISSANCE BARCELONA HOTEL BARCELONA

Our travel experts have carefully selected this first-class property for its prime location near the Passeig de Gràcia. It is ideally located for exploring Barcelona's renowned landmarks, while providing opportunities to immerse yourself in local life. Of utmost importance is the quality of the services, amenities and accommodations, allowing you to fully enjoy your stay.

Reserve your trip to Barcelona today!

Trip #:1-23293W

Send to: Barcelona Immersion
Ashley Clayton Olive
University of Alabama National Alumni Association
P. O. Box 861928
Tuscaloosa, AL 35486-0017
Phone: **205-348-1547** Fax: **205-348-5958**

Please contact AHI Travel at 800-323-7373 with questions regarding this trip or to make a reservation.

Full Legal Name (exactly as it appears on passport)

(1) _____
Title First Middle Last Date of Birth

Email: _____

(2) _____
Title First Middle Last Date of Birth

Email: _____

Street Address: _____

City: _____

State: _____ ZIP: _____

Home: (_____) Cell: (_____) _____

Sharing with _____ (Form sent separately.)

I/we authorize you to make my/our reservations as follows:

Land Program and AHI FlexAir

☐ I/we reserve the Land Program and request the round-trip AHI FlexAir to and from Barcelona, Spain, to depart from:

Departure City

☐ Please contact me regarding air options.

☐ Please send me information on upgrading my flights.

Land Program

☐ I/we will make my/our own air arrangements and transfers.

Single Accommodations

☐ I prefer single accommodations at an additional \$495 (limited availability).

☐ I request assistance in securing a roommate but will accept a single, if one is available at this time, and pay the single supplement. Should a roommate be found, I understand the supplement will no longer apply.

Reservations are subject to availability and processed on a first-come, first-served basis. Reservations to be paid in full by **December 19, 2016** (75 days prior to departure). Reservations received after this date must be accompanied by payment in full. Final payment may be made by personal check, MasterCard, Visa, Discover or Amex. Make checks payable to AHI Travel.

Enclosed is a deposit of _____ (\$600 pp required) to reserve _____ place(s).

☐ Accept my check made payable to **AHI Travel**.

☐ Charge my: ☐ MasterCard ☐ Visa ☐ Discover ☐ Amex

Card # _____

Expires _____/_____

(Signature as it appears on credit card)

Please note: Any payment to AHI Travel constitutes your acceptance of the terms and conditions set out herein, including but not limited to the cancellation terms.

If you are interested in making independent travel arrangements before and/or after this program, please contact **AHI Travel at 800-323-7373** no later than **60 days prior to departure** and they will be happy to assist you with your reservations. *A nonrefundable service fee and additional air/land charges based on reservations apply.*

LAND PROGRAM

March 5-12, 2017

Full Price	Special Savings	Special Price*
\$2,745	\$250	\$2,495*

*Special Price valid if booked by the date found on the address panel.
VAT is an additional \$295 per person.

All prices quoted are in USD, per person, based on double occupancy and do not include air transportation costs (unless otherwise stated). Single accommodations are an additional \$495 (limited availability).

NOT INCLUDED-Fees for passports, visas, entry/departure fees, personal gratuities, laundry and dry cleaning, excursions, meals and beverages not described in this brochure as included, travel insurance and all items of a strictly personal nature.

MOBILITY AND FITNESS TO TRAVEL-Participants should be in good health and able to walk moderate distances over varied terrain. Participants needing individual assistance for walking, dining or other personal needs must be accompanied by an able companion who will assist them. The right is retained to decline to accept or to retain any person as a member of this trip who, in the opinion of AHI Travel is unfit for travel or whose physical or mental condition may constitute a danger to themselves or to others on the trip, subject only to the requirement that the portion of the total amount paid which corresponds to the unused services and accommodations be refunded.

AIR TRANSPORTATION-The price of air transportation offered by AHI Travel is based on Advance Purchase Excursion fares. After tickets are issued, penalties up to 100% of the ticket price may be levied. If connecting flights are requested, special promotional fares may be used, in which case penalties of as much as 100% may be assessed by the airlines if reservations are changed or canceled after ticketing. After departure, if the reservations are changed, you will be charged the higher, all year Economy class fare. **VARIATIONS TO THE GROUP ITINERARY MUST BE REQUESTED NO LATER THAN 60 DAYS PRIOR TO DEPARTURE.** Passengers who choose to make their own airline reservations independently will be wholly responsible for any airline fees or penalties incurred as a result of program cancellation and/or change in travel dates, or airline schedule(s).

BAGGAGE-Baggage restrictions vary according to the airline policy and the class of service flown. Details will be provided with your pre-departure information. Baggage allowances are subject to change by the carrier without notice. Excess baggage charges for additional or oversized/overweight pieces are expensive and not included in your trip price; plan your wardrobe accordingly. Transport of baggage and personal effects is at the owner's risk throughout the travel program.

RESPONSIBILITY OF PARTICIPANT-This program includes room accommodations in Barcelona. It is the responsibility of each participant to leave his/her room accommodations at the conclusion of the program in as good a condition as it was when the program began. Participants may be assessed charges for repairs or cleaning required due to damage beyond normal wear and tear caused or permitted by a participant.

AUTHORITY TO USE IMAGES AND AUDIO RECORDINGS-On occasion, AHI Travel obtains, from its staff, or from trip participants, photographic or video images of passengers and trip activities. By participating in this travel program, you authorize AHI Travel, without providing compensation to you, or obtaining additional approvals from you, to include photographic and video recordings of you, as well as voice recordings included with any videos, in AHI Travel's sales, marketing, advertising, publicity and/or training activities.

RESPONSIBILITY-AHI Travel and the Sponsoring Association do not own or operate any entity which provides goods or services for this program, and act only as agents for the independent suppliers of travel conveyance, transport, accommodations or other services. All such persons or entities are independent contractors. As a result, AHI Travel and the Sponsoring Association are not liable for any negligence or willful act of any such person or entity or any third person. In addition and without limitation, AHI Travel and the Sponsoring Association are not responsible for any delays, delayed departure or arrival, missed carrier connections, loss, death, damage or injury to person or property or accident, mechanical defect, failure or negligence of any nature howsoever caused in connection with any accommodations, transportation or other services or for any substitution of hotels or of common carrier equipment, with or without notice, or for any additional expenses occasioned thereby. Dates, Program Details and Tour costs, although given in good faith and based on tariffs, exchange rates and other information current at the time of printing, are subject to change at or before the time of departure. No revisions of the printed itinerary or its included features are anticipated; however, the right is reserved to make any changes, with or without notice, that might become necessary, with the mutual understanding that any additional expenses will be paid by the individual passenger. Baggage and personal effects are the sole responsibility of the owners at all times. If the entire program is canceled for any reason, participants shall have no claim other than for a full refund. By forwarding the deposit, the passenger certifies that he/she has no physical, mental or other condition of disability that would create a hazard for himself/herself or other passengers and accepts the terms of this contract set out herein and in more specific pre-departure passenger information. The airlines and other transportation companies concerned are not to be held responsible for any act, omission, or event, during the time passengers are not on board their conveyances. The passage contract in use, when issued, shall constitute the sole contract between the company(ies) and the passenger and/or purchaser of this trip.

CANCELLATION-All cancellations for any reason will be subject to a \$250 per person administrative fee. You may choose, at the time of cancellation, to apply the withheld administrative fee to a future AHI Travel program that will operate in the current calendar year or year following. Cancellation from 120 days to 76 days prior to departure will result in forfeiture of 10% of the entire cost of the trip per person; 75-30 days, 50% of the trip cost per person; cancellation from 29 days up to the time of departure will result in 100% forfeiture of the entire cost of the trip. **TRIP CANCELLATION INSURANCE IS AVAILABLE. AN APPLICATION WILL BE SENT AFTER YOU RESERVE.** All cancellations must be submitted in writing to AHI Travel. **CANCELLATION OF TRIP OPTIONS**-Purchases of optional excursions, trip extensions and additional hotel nights become fully non-refundable 45 days prior to departure. Air transportation and private transfer purchases are subject only to penalties assessed by the airlines and transfer suppliers.

AHI FLEXAIR

March 4-12, 2017

Our personalized air program allows you to select your flights, routing, class of service and dates of travel in consultation with one of our experienced Passenger Service Representatives. Airfares will vary, depending on airline, routing and class of service. In most cases, transfers between the airport and hotel/cruise ship will be included on arrival and departure days. Your Passenger Service Representative will provide you with all of the details you need to guarantee your transfer. Book your air with us to ensure assistance in the case of schedule changes or delays that may impact your air travel plans. AHI FlexAir participants automatically receive flight insurance worth up to \$250,000, subject to policy terms.





THE UNIVERSITY OF
ALABAMA
A L U M N I

University of Alabama National Alumni
Association
P. O. Box 861928
Tuscaloosa, AL 35486-0017

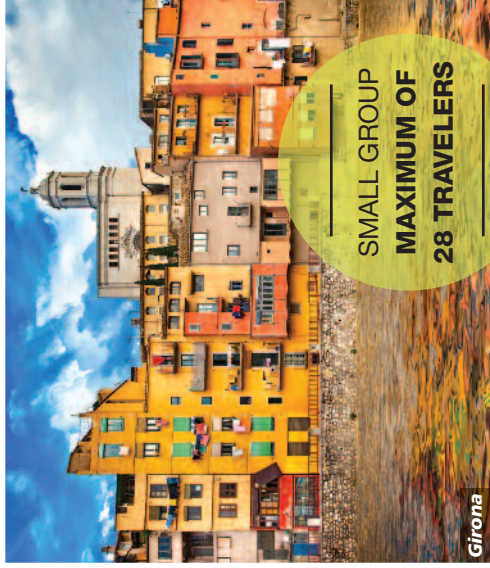
SPAINBAR17 132

800-323-7373

al.ahitravel.com



Santa Maria del Mar



Girona

SMALL GROUP
MAXIMUM OF
28 TRAVELERS

Explore enchanting Barcelona with alumni and friends!

***Please call or refer to our
website for the most current
program information,
discounts and pricing.***

AHI Travel's mission is to deliver inspirational educational and cultural travel programs that delight travelers.

With AHI you can rely on:

- Experienced Travel Directors who attend to every detail of your journey.
- An exceptional travel value.
- Unique access to local sites.
- Flexibility and customization.
- Safety and security.



Presorted Std.
U.S. Postage
Paid
AHI Travel