

# From the STACKS

Vol. II No. 1  
Winter 2009

*Honoring the past through the Alabama Alumni  
Magazine archives*



Its buildings, landscapes, equipment, fields of study and professors have changed throughout The University of Alabama's past 100 years, but one thing that hasn't is the *perpetual motion* of its residents. With a dizzying blend of energy and enthusiasm, college students at the Capstone are always moving. In the following pages you'll be reminded of activities that have stood the test of time, along with sports fads that have come and gone.

Editor and Designer: Mary Cypress Howell  
Manager of Publications: Janice Fink

All materials copyrighted to the *Alabama Alumni Magazine* and printed here solely for entertainment purposes.  
No claims are made as to the validity of the programs, products or services represented.



# THE 1910S

BASEBALL AND FOOTBALL TEAMS, 1915



1915

TRACK TEAM AND GLEE CLUB, 1915







A COMPREHENSIVE course in concrete work is offered during the summer school for the benefit of high school teachers and others who may wish to study the manifold uses to which concrete may be put. Actual practice is given in the mixing of materials and the testing of results. Students are taught how to lay cement walks and curbs, how to make fence and hitching posts, flower pots and stands, watering troughs, building blocks, forms for concrete steps, etc. A few practical demonstrations in tree surgery are given.

In one of the illustrations on the opposite page a class in concrete work is laying a cement walk, and in the other it is building a curb and gutter.



1915




IN ACCORDANCE with its fixed policy of meeting the needs of the teachers of the state whenever these needs become manifest, the summer school last year reorganized its department of manual training and greatly increased the scope of the work of the department. Courses were offered in wood working, mechanical drawing, handwork for the grades, concrete work, and the theory and practice of teaching manual training.

For the benefit of teachers who wish to introduce woodworking into their schools a large well lighted room in Comer Hall was set apart and equipped as a model workshop. The woodworking benches and fixtures are all of standard type and the tools required are of best quality. The layout of the room was planned with reference to appearance and to an economical utilization of space.

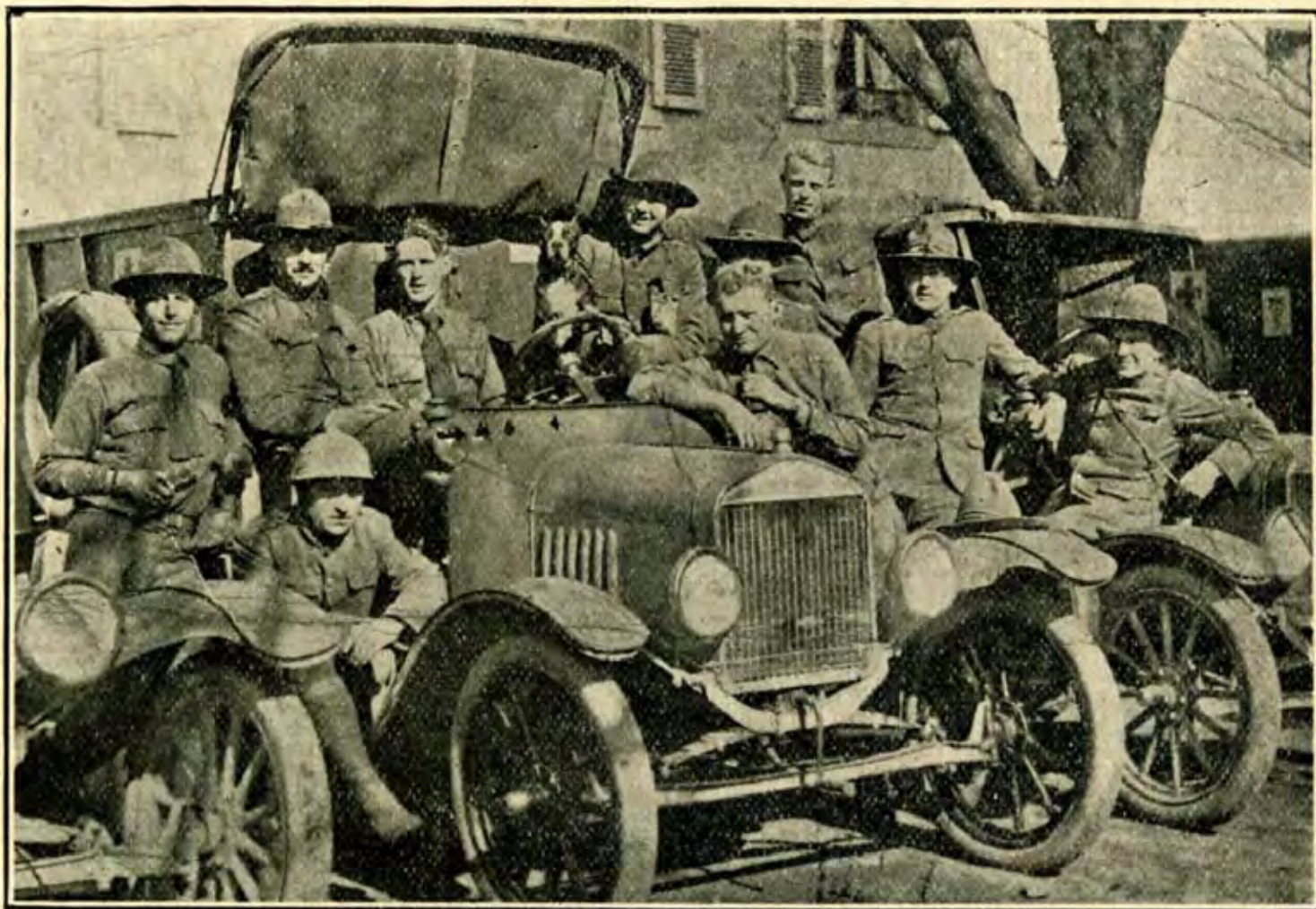
On the opposite page is a view of a class hard at work in this model room. The articles in front, on the floor and on the table, were made and then stained or painted by the students.





Group of Alabama Selectmen Being Trained in Motor Cycle Work at the University

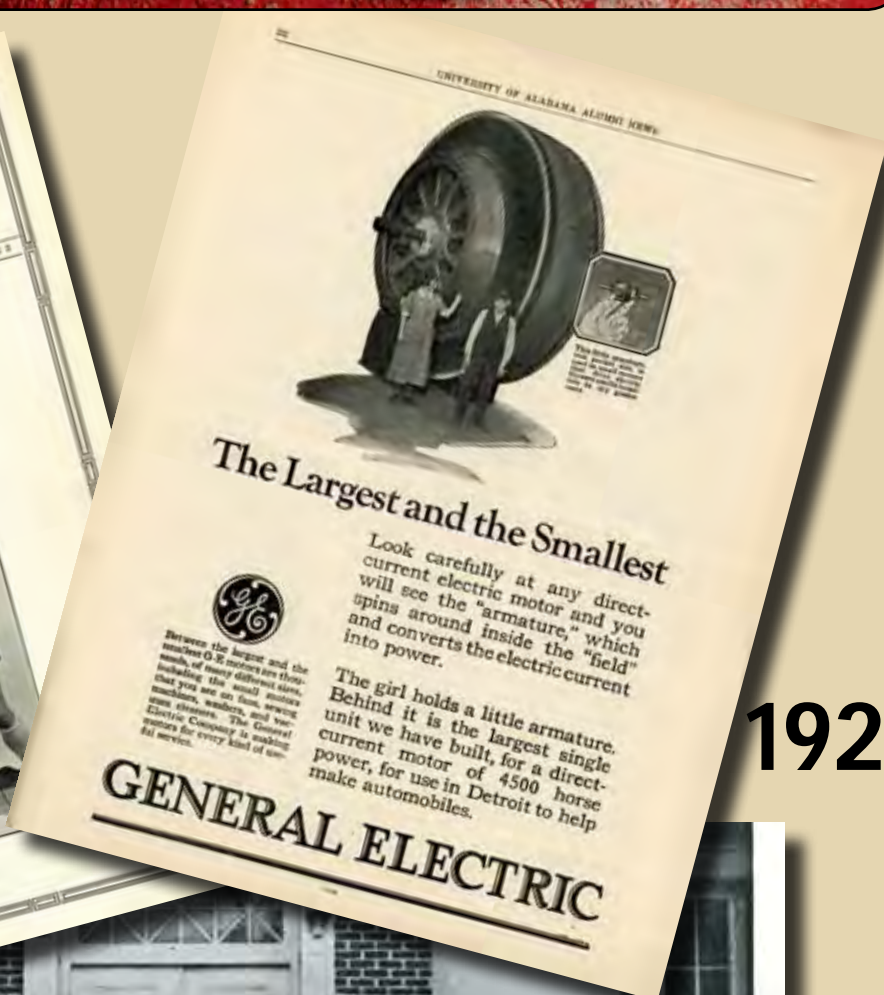
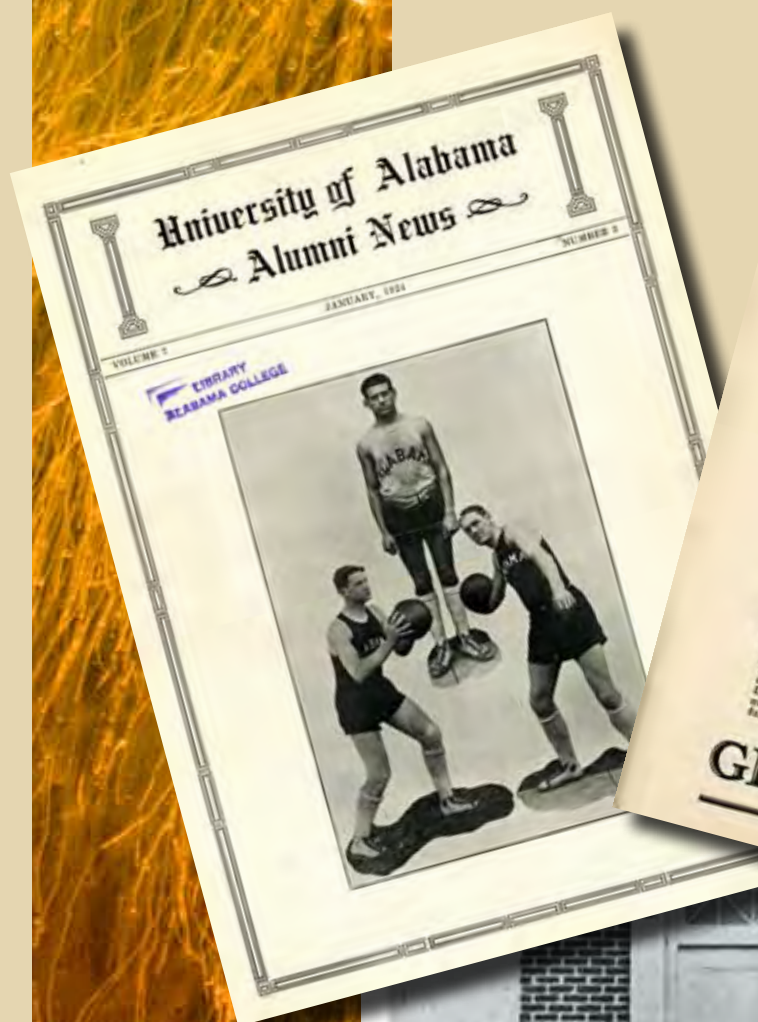
1918



Alabama's First Hero to Yield His Life in France  
John S. Henry, '17, with a portion of Section 133, Ambulance Corps, with the French army.  
Henry is the central figure in the picture, holding the dog



# The 1920s



1924



## Athletics Of The Early '20's

World War I had come to a victorious close and, with the return of the boys from service, 'Bama's campus was teeming with activities. Everyone realized more than ever the need of a college education and the importance of athletics for all.

Sports were not confined to men only; women were coming into the limelight in sports. Some people still objected on the grounds that it was too masculine, but, in spite of objections, the girls went right along into their favorite sport, basketball. They developed good teamwork under the able coaching of Emmett McGauley, '24, captain of the men's varsity team, and made athletic history for the University. They traveled to neighboring colleges to play their game and represent the University.

The members of the team pictured above are, left to right: Mary McLendon, '21; Lilian Rose, '25; Bonnie Jones, '22, captain; Gladys Clayton, '24; Inez Thames, '24; Emily Woodruff, '23; Frances Gilmore, '23, manager and president of the Girls' Athletic Association; Ruth Street, '23; Pauline Street, '24; Emmett McGauley, '24; coach; Marilyn Luck, '23; Lyman Milam, '24; Lois Smyer, '22. Nell Anderson, '22, and Lillian Gatchell, '22, who are not in the picture, also played on the team.

In order that we may bring the records up to date on the above alumnae, we would appreciate our readers sending any information they have about them to the Alumni Office.





Captain Red Barnes

1926



*Rose Bowl*



1927



## Girls' Gymnasium To Be Named For Dean Barnwell



1929

## Work Begun On New Stadium

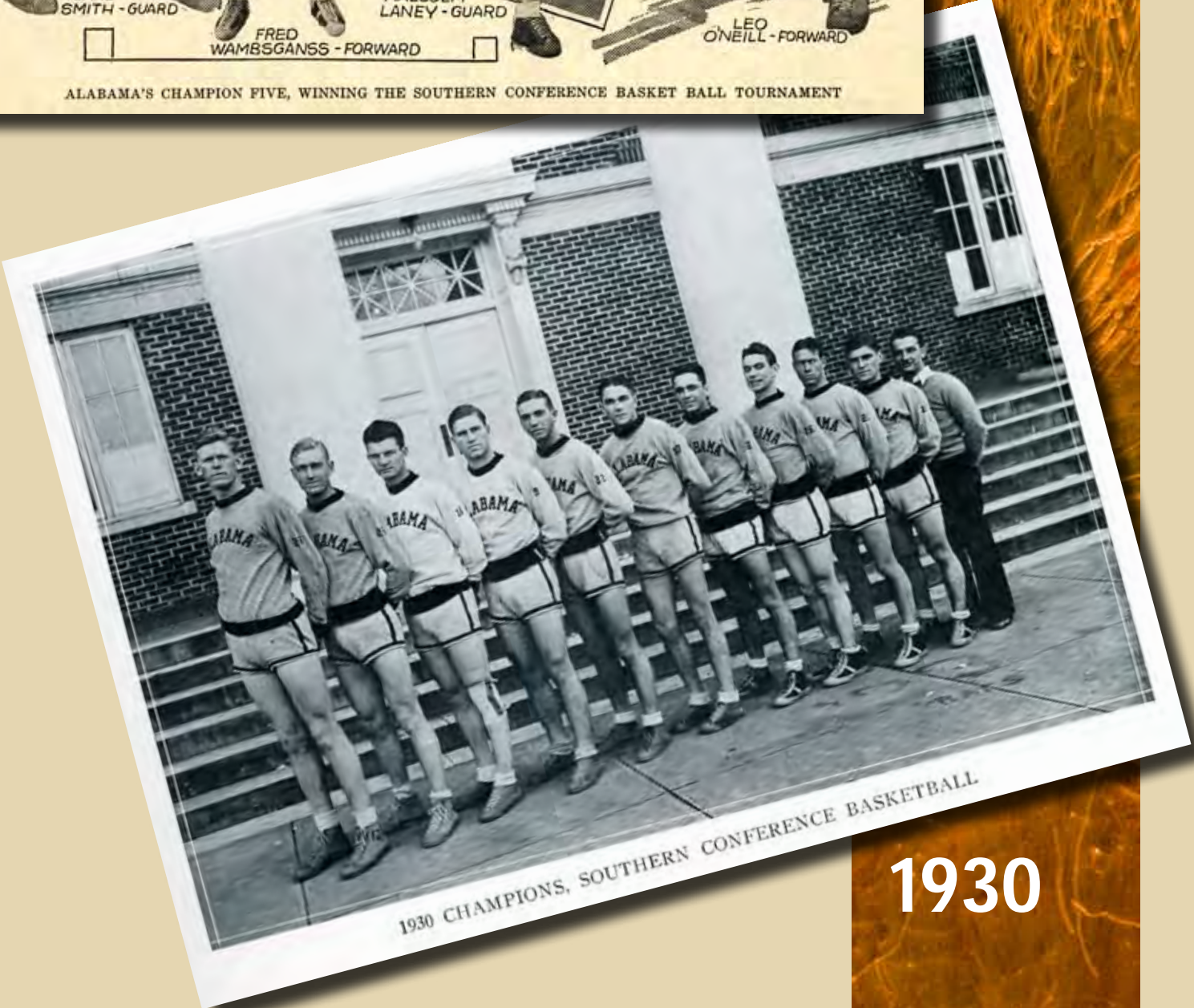
Grading Being Completed On Final Unit To Seat 12,265 People

1927





# The 1930s



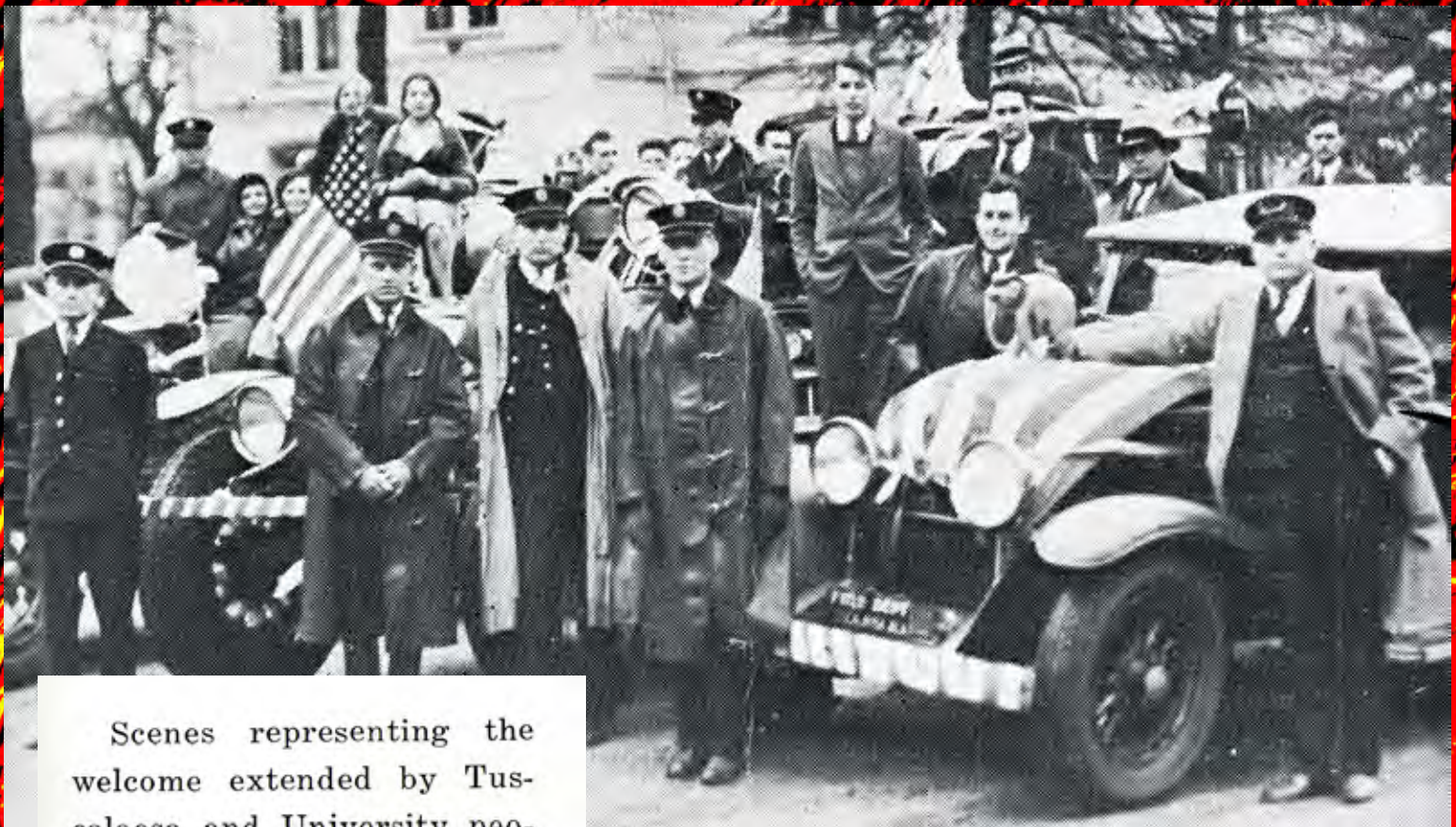
1930



# NEW COACH OF TIDE AND SOME OF STARS



1931

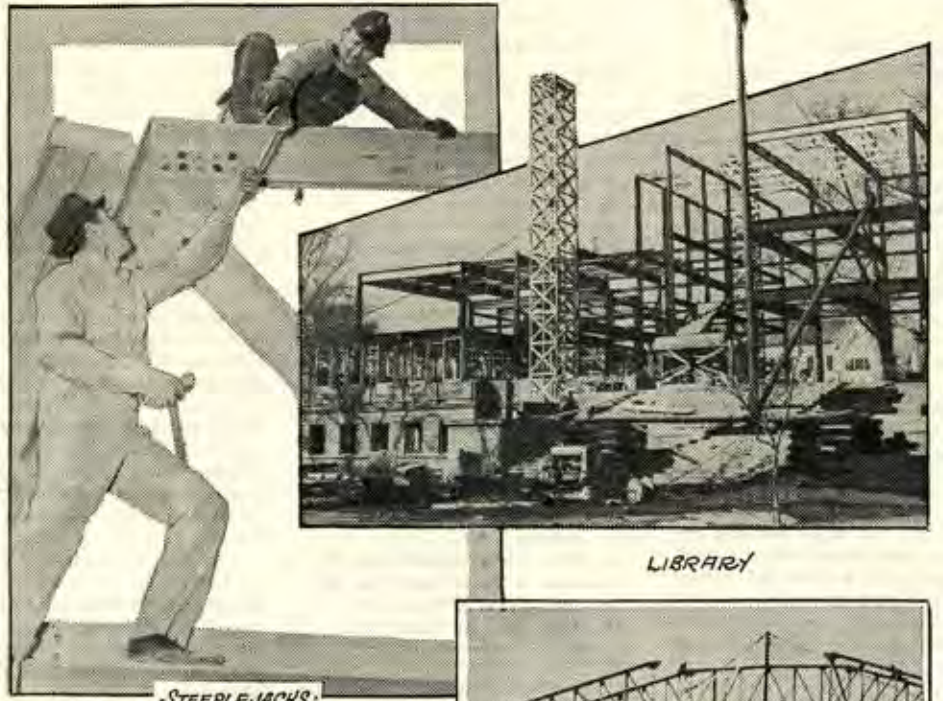


Scenes representing the welcome extended by Tuscaloosa and University people to the Crimson Tide on its return from the Rose Bowl.



1932

## Building Operations on the Campus



LIBRARY

STEEPLEJACKS



RAZING FOR WOMEN'S DORMITORY



FIELD HOUSE

## Growth of the University

A Remarkable Record Showing An Exceptional Expansion In Opportunities Offered As Well As In Registration

## University's Aviation School



Alabama's part in the President's huge aviation program will be carried on in the scenes above. Top left is Tuscaloosa's new and modern airport. Here trainees will take their first hops. Top right is a section of the laboratory where students will work. Bottom left shows the wind tunnel in operation and the new engineering building is pictured at bottom right. In the background is one of the Army's speed ships.

1939



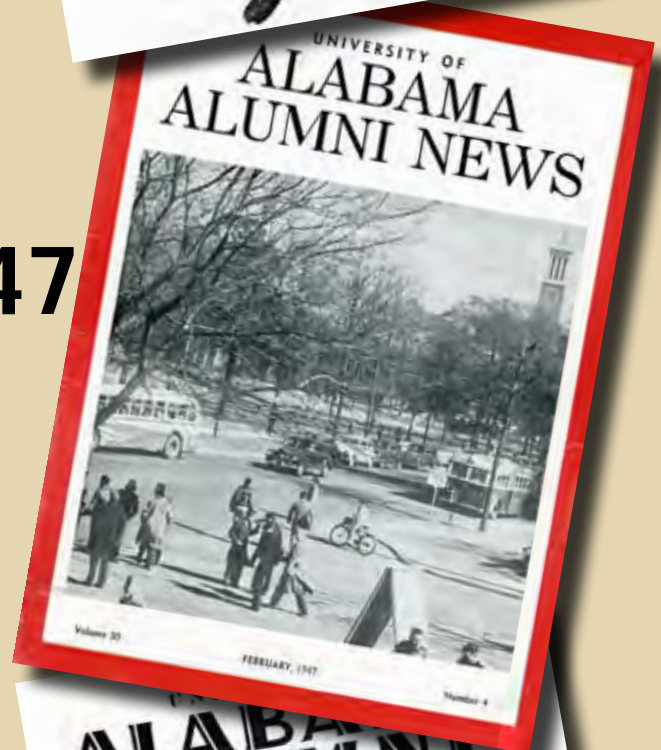
# The 1940s

1949



1941

1947



1940



1941





Lt. Edward M. Cain, A. '44, of Jasper, Ala.  
(see personal).

Headed home for a rest is 1st Lt. **Edward M. Cain**, B-26 Marauder pilot from Jasper, who recently completed his tour of operations in the European theater.

Lt. Cain has more than 60 missions to his credit, and has flown more than 21,000 combat miles. He holds the Air Medal with 10 Oak Leaf Clusters. The majority of his missions have taken him over Germany, where he participated in the aerial phases of the Battle of the Bulge, and paved the way for the current allied advances.

A former student at the University, Cain flew with the Ninth Air Force's 344th Bombardment group. His brother, Richard A. Cain, Jr., resides at 1617 Alabama St., Jasper.

1945

1943



1943







1946



Intra-mural sports play a big part in student life on the Alabama campus. Soft ball tops the list of the "athletics for all" program. The hero is Truman Daniels of Pi Kappa Phi fraternity.



1947



1949



# THE 1950S

1957

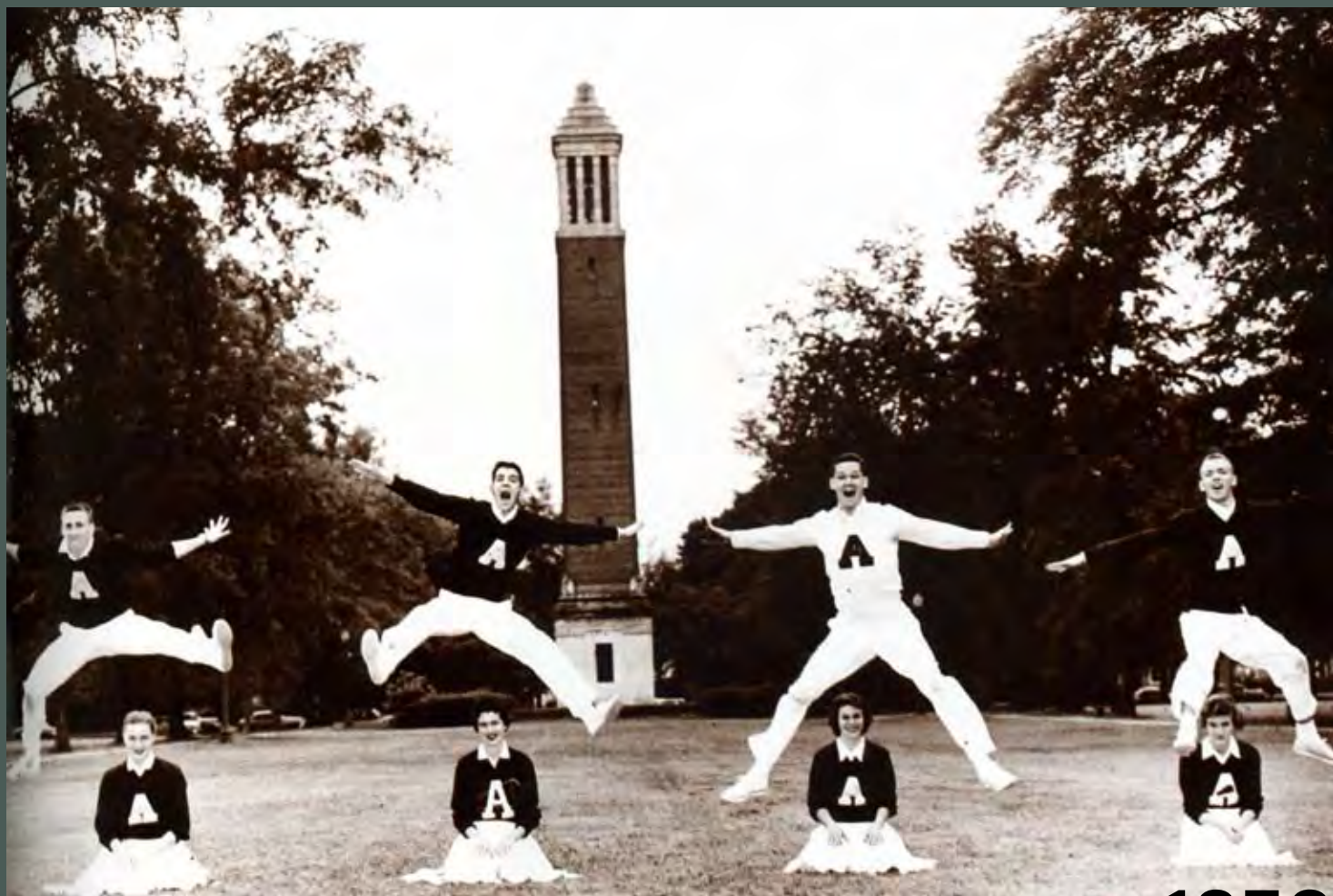


1956



1957





1958

## Spring Sports Roundup —

By Philip G. Hess  
Assistant Athletic Publicity Director

The big news of the spring was the windup of the basketball season, as the Crimson Tide earned national fame with a 21-3 record and a walloping win over the Kentucky Wildcats (101-77). Bama stepped aside because of ineligible players and Kentucky went on to the NCAA tourney.

In baseball, Coach Tilden "Happy" Campbell just missed his 11th SEC division crown by winning every series played, but ending the season one pace behind Ole Miss. The Tide beat Ole Miss twice, but lost the clincher with Vanderbilt in the last week of the season.

Finishing with an overall 18-7 record, (15-5 in the SEC), Bama could have gone all the way with the addition of one more starting pitcher. All-SEC pitcher Frank Roland, winner of 12 while remaining unbeaten in two varsity years, was the mainstay, and is being considered seriously for All-American nomination at this writing.

Arch-rival Auburn was the only one of five opponents to best the Tide in dual track meets, as the thin-clads topped Tennessee, Mississippi State, Georgia Tech and Mississippi Southern.

Bama gained fourth place in the annual SEC relays in Birmingham, as Coach Harold "Red" Drew finished his second season as a track coach since 1942.

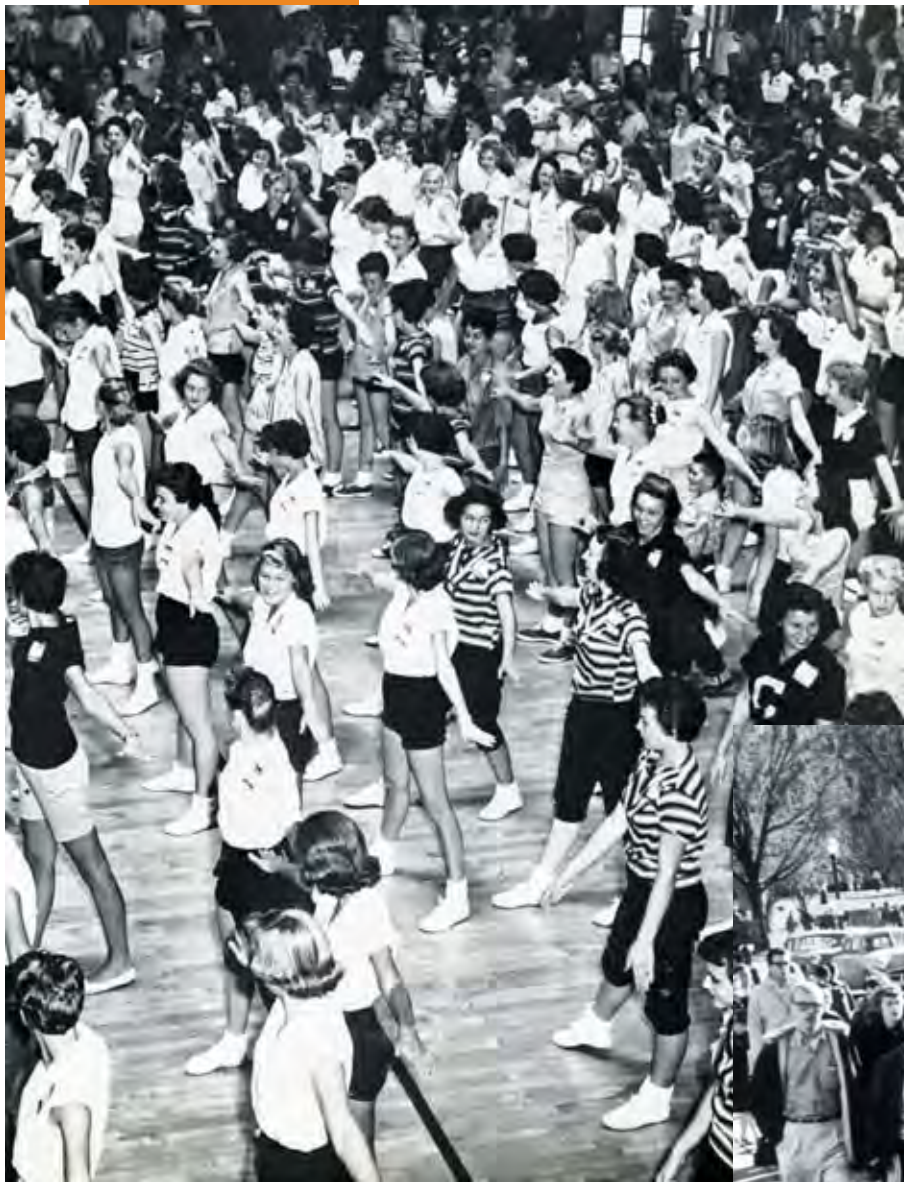
In both golf and tennis, the Tide earned a 500 season. In tennis, the 6-6 record was quite an improvement over last year's 1-6. The racquet squad dumped Marion Institute, Southern Illinois, and Birmingham Southern and Auburn twice.

Taking over as golf coach for the first time, James "Bubba" Nesbit guided the Tide to a 4-4 year with wins over Auburn, Kalamazoo, and Mississippi State twice, while dropping meets to Auburn, Florida State, Lamar College (last year's NCAA champions), and Vanderbilt. In SEC matches, the Tide ended with a 3-2 record.



1956





1957

WITH growth have come problems for the colleges and universities. One of the most pressing, today, is swelling enrollments. Already they are straining higher education's campuses and teaching resources. But the present large student population is only a fraction of the total expected in the next decade.



1958



1959



# The 1960s

1963



1960



1964





OUR THREE-YEAR-OLD NATATORIUM  
IS DOING A BRISK BUSINESS

1963



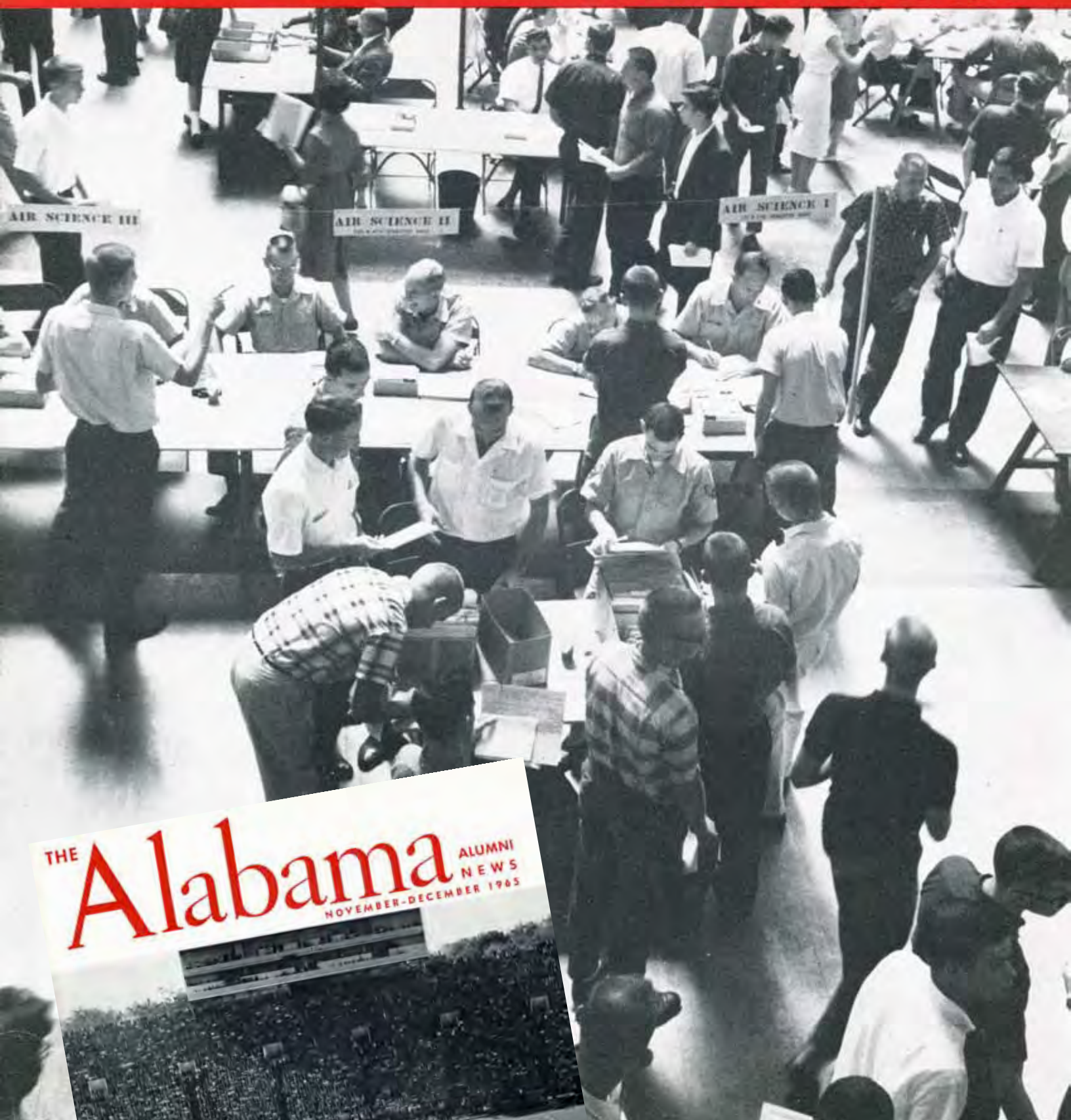
THE

# Alabama

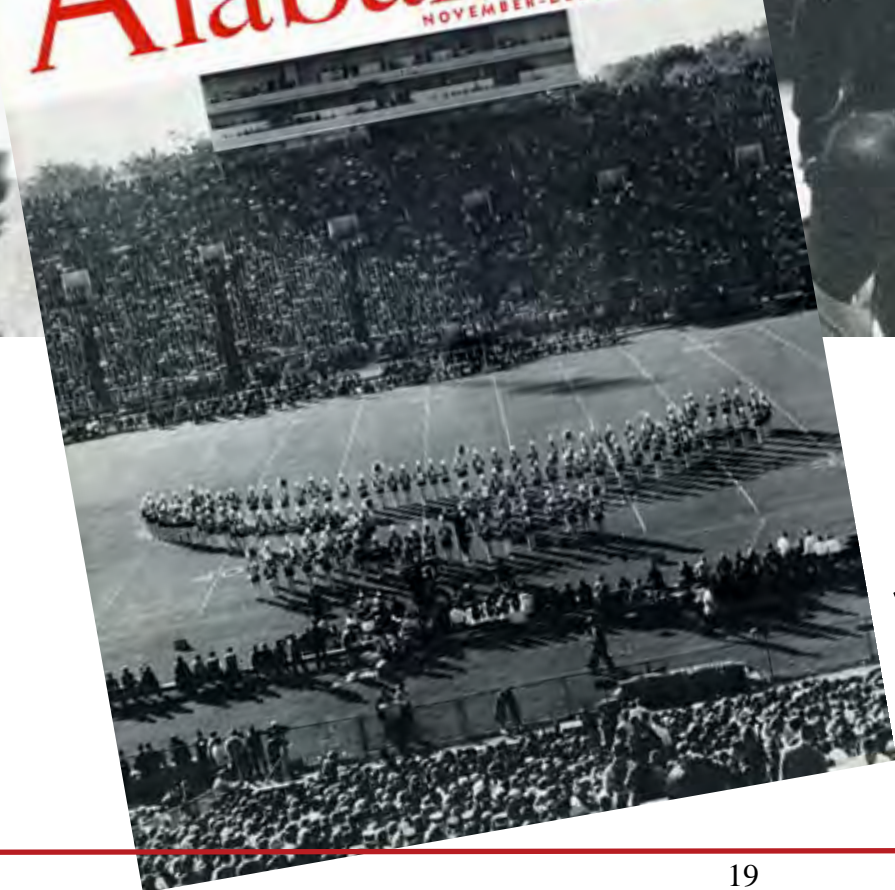
1960

ALUMNI  
NEWS

SEPTEMBER-OCTOBER 1960



THE  
**Alabama** ALUMNI  
NEWS  
NOVEMBER-DECEMBER 1965

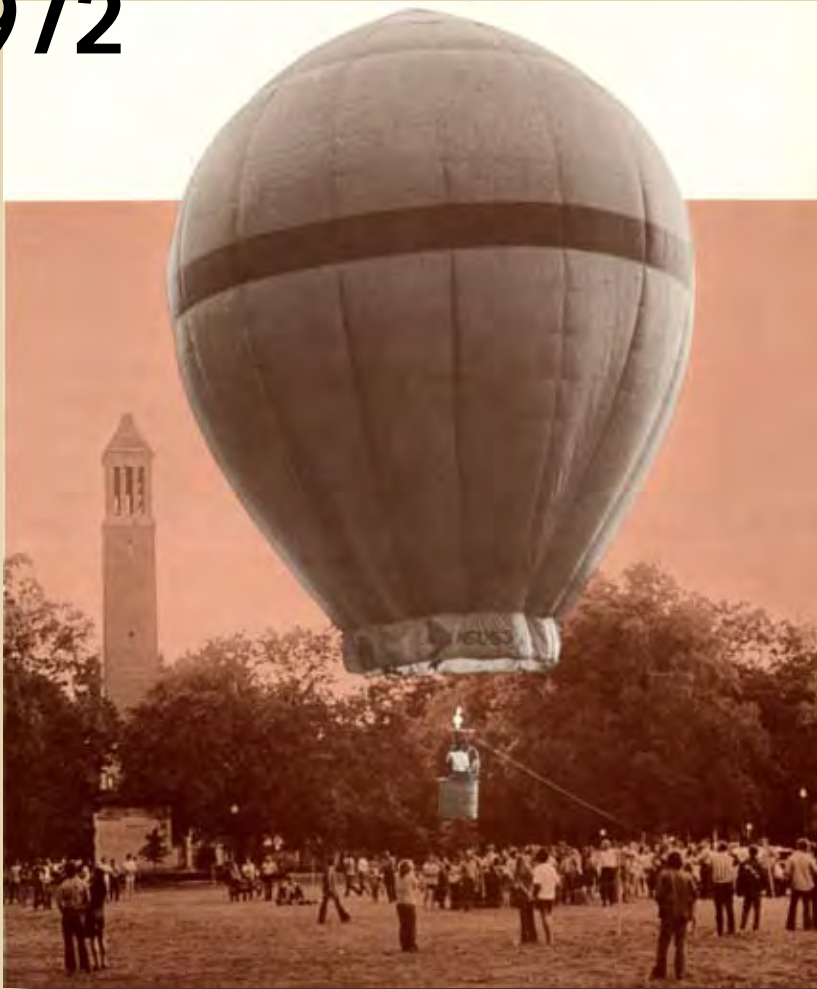


1965



# The 1970s

1972



1979



1979



1978



1974



1976





# Alabama Homecoming 1970

*The glow of homecoming sparkled on the faces of everyone visiting the University Homecoming weekend. Among the highlights of Homecoming . . . Kathy Neugent, Birmingham, elected queen . . . portrait of the late Gordon Palmer, member of the Board of Trustees for sixteen years, unveiled . . . Thomas W. Christopher named Dean of the Law School . . . Homecoming theme "Bulldogs Bark as Bama Bites" becomes a reality as Alabama downs Mississippi State 35-6 before 58,843 fans . . . And the faces just kept on glowing.*



1970



# THE 1980S

1985



1981





1982



1983

1984



**"THAT WHICH DOES NOT  
KILL ME MAKES ME  
STRONGER"**  
Nietzsche



1988





1988

1989



Junior **Laura Heard**, Alabama's Best Defensive Player 1987-88, is as intense about her studies as she is about basketball.



Sela Ward

1983

# GAMEBITS



1988



(L-R front) Kim Masters, Wendy Anderson, Cheri Way, Susan Pierce, Tracey Tillman and Alison Blumberg. Second row has Tina Rinker, Marie Robbins, Kelly Good, Alison Beldon and Kathy Bilodeau.

**Bama gymnasts vault to unparalleled heights**

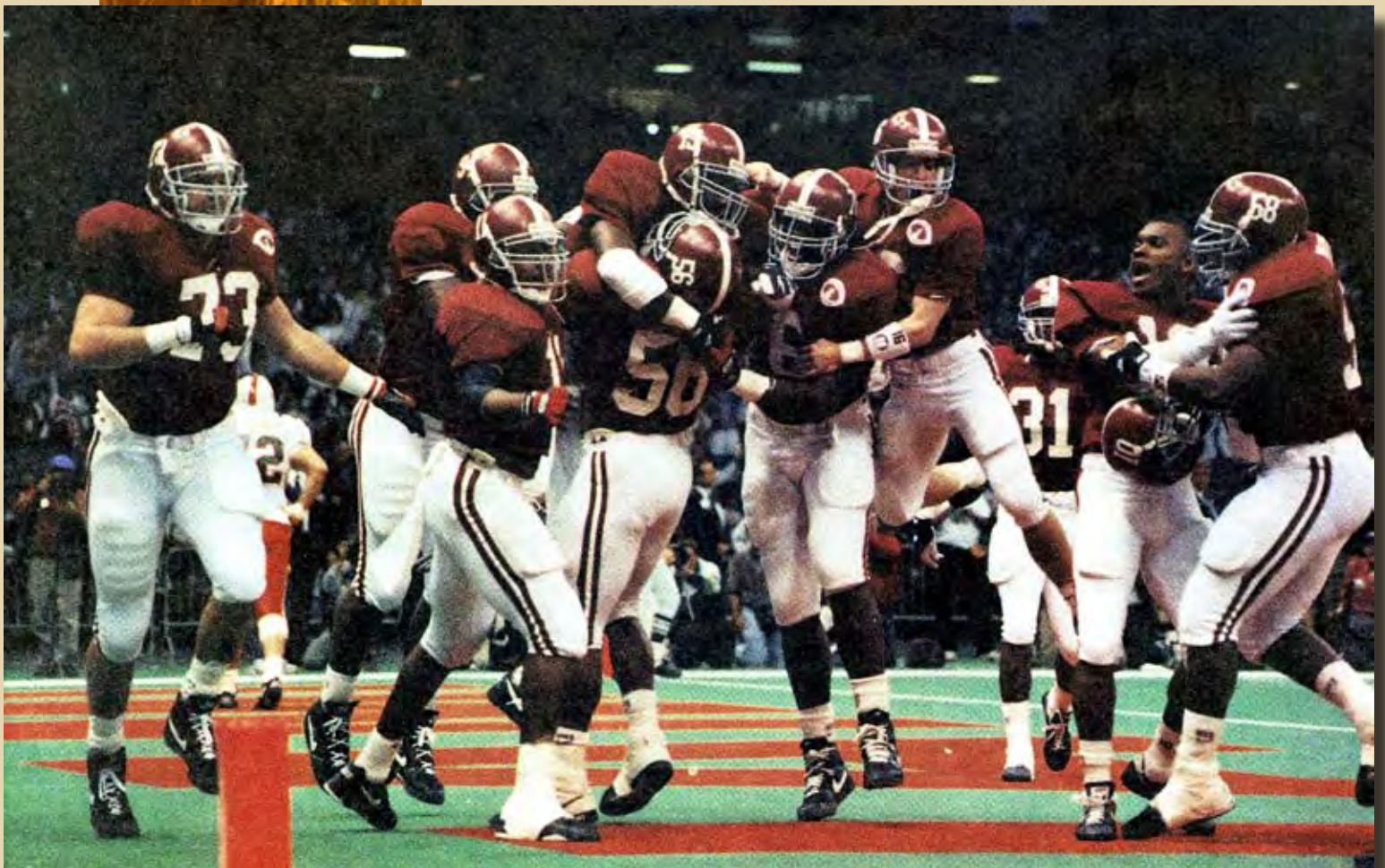
# NATIONAL CHAMPIONS!



# The 1990s

Bama fields a frisbee team which recently lost in the Mud Bowl but will soon be seeking its revenge on the grassy fields of home.

1991



1993



*Engineering students participate  
in NASA zero-gravity simulation*



Mats Nilsson, 1996 and 1997  
SEC javelin throw champion  
and 1997 NCAA champion



**1998**



**Young, but able**



1993

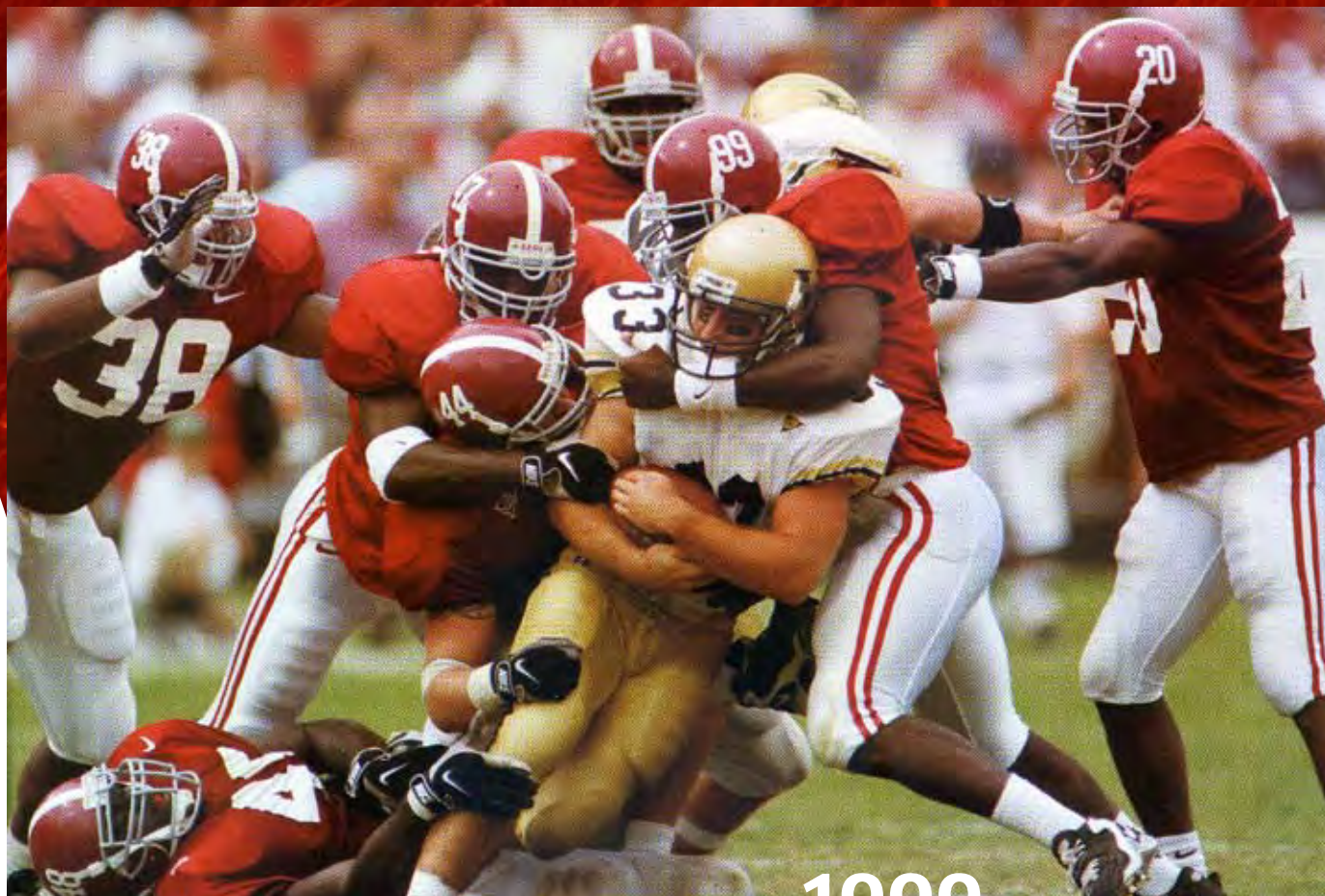


1999



Rehearsals were "play time" for tribe members, who quickly lost their inhibitions when the choreography put them "on the floor grinding."

The musical *Hair*

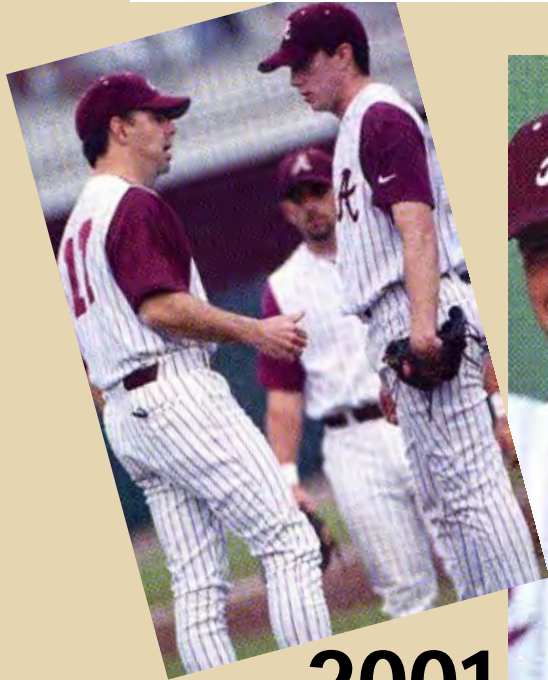


1999

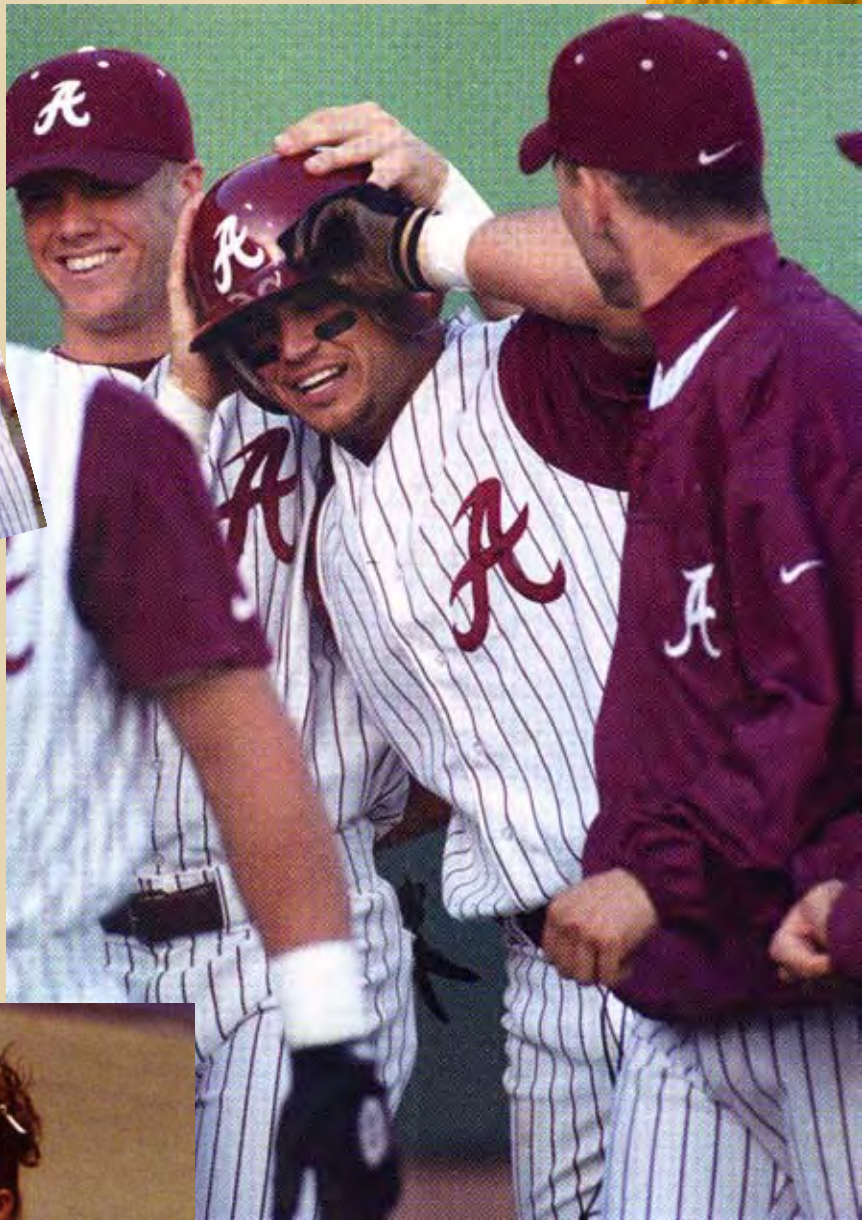


# The 2000s

**Baseball team records one milestone after another**



**2001**

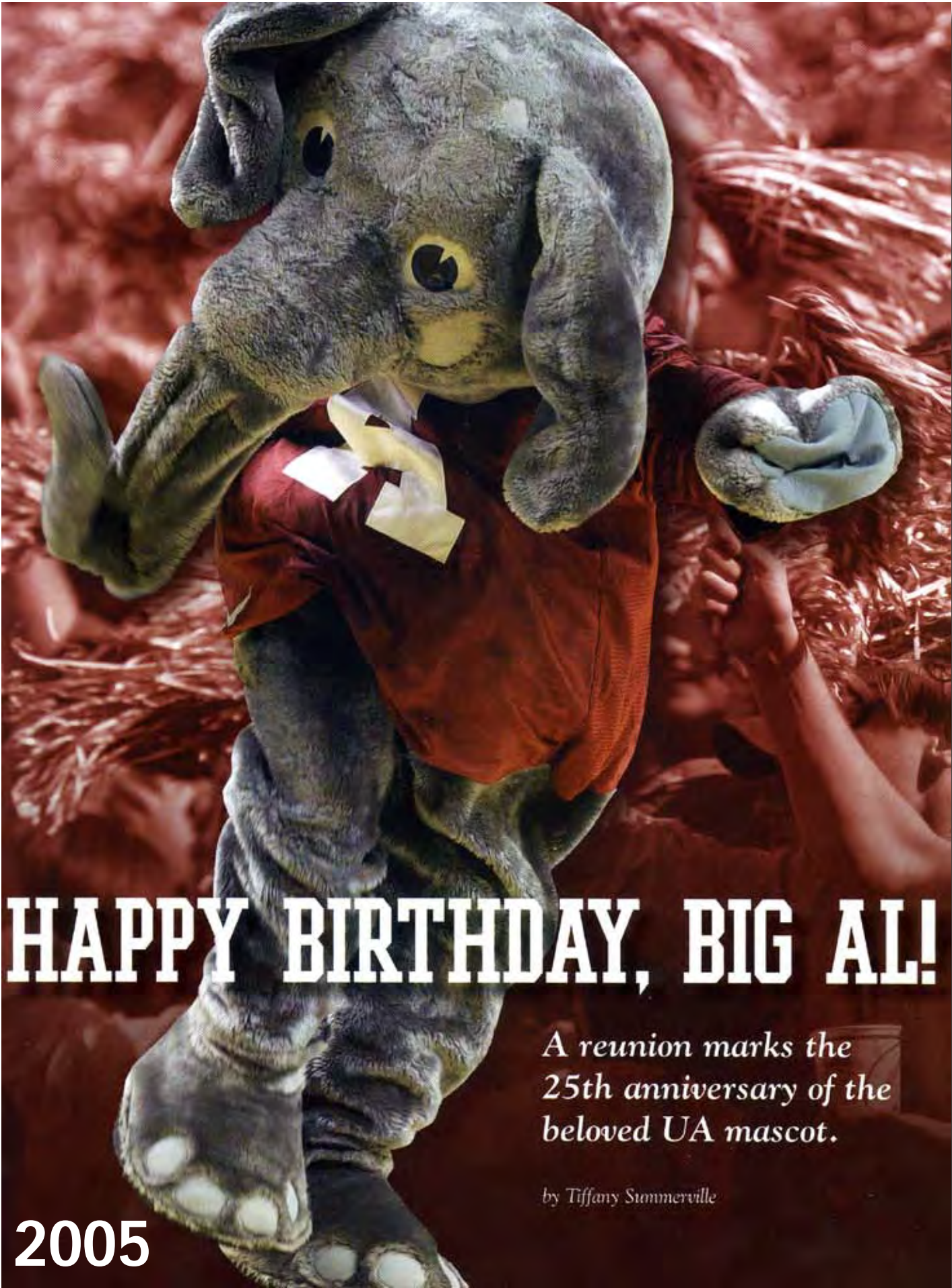


**2002**



**Crimson Cabaret ranks in top 10**

**2004**



**HAPPY BIRTHDAY, BIG AL!**

*A reunion marks the  
25th anniversary of the  
beloved UA mascot.*

*by Tiffany Summerville*

**2005**



2007

# MASTERS of BALANCE

by Katharine Snowden



2002



*Capstone Village retirement community joins the campus.*

2008

